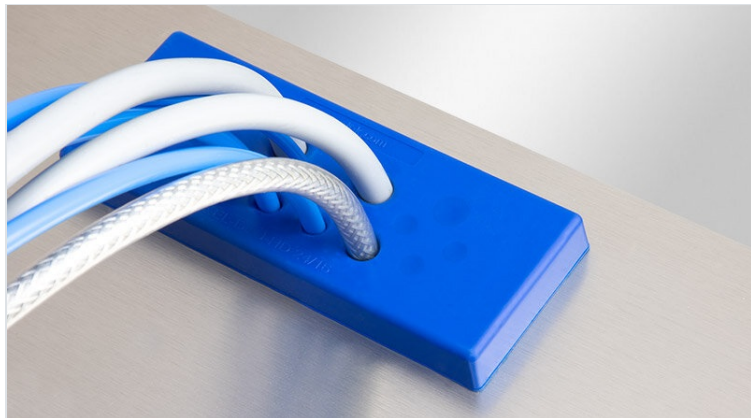


KEL-DPU-HD hygienic multi-membrane cable entry plates

with high strain relief function, pluggable / IP66 / IP68 / FDA compliant



The new cable entry plates KEL-DPU-HD have been specially developed for installation in food processing and packaging machines. During the development according to the Hygienic Design guidelines, care was taken to ensure that the visible side of the cable entry plate are free of dirt-collecting recesses. The surface was kept very smooth ($R_a = 0,421 \mu\text{m}$ acc. to ISO 4287). The outer contour has a radius of 6 mm instead of the required 3 mm. In addition, the KEL-DPU-HD uses an FDA-compliant elastomer in accordance with food approval 1935/2004/EG and (EU) 10/2011. The signal colour blue ensures a clear visual colour recognition.

KEL-DPU-HD entry plates are designed to route and seal cables without connectors (from 3.2 mm to 20.5 mm in diameter) in limited space with IP66/IP68**. The KEL-DPU-HD is particularly characterised by its solid robust frame and the increased strain relief of the routed cables.

The KEL-DPU-HD 24 matches exactly the cut-out dimensions of 24-pin standard industrial connectors. The cable entry plate is mounted either by screwing it to the inside of the enclosure or by snapping it into the cut-out.

** IP68 only when screw mounted



Specifications

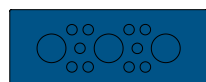
| | |
|------------------------------|---|
| IP rating (EN 60529) | IP54, IP55, IP64, IP65, IP66, IP67, IP68 |
| Material | Elastomer Base frame: Polypropylene |
| Flame class | UL94-HB |
| Operating temperature | -40 C° to 80 C° |
| Properties | silicone free, resistant to oil and mould, higher chemical resistance, halogen free |
| Mounting options | Screw type mounting, Snap-in |

Advantages & benefits

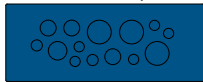
- Elastomer of the cable entry plate made of material according to 1935/2004/EG , (EU) 10/2011
- FDA compliant
- Developed according to hygienic design guidelines
- Hygienic design - free of dirt-collecting recesses
- Very flat design, very smooth surface ($R_a = 0,421 \mu\text{m}$ acc. to ISO 4287)
- Dual sealing of cables (IP66/IP68**)
- High strength and stability
- High strain relief
- Fast and easy assembly
- Very high cable density
- Cable diameter 3.2 - 20.5 mm
- Reproducible cleaning process
- Very low moisture absorption
- High resistance to aromatic solvents, oils, greases, mineral products

Product types & sizes

KEL-DPU-HD 24|13



| | | | |
|------------------------|----------------------|------------------------------|---|
| Part No. | 73940 | Height | 14 mm |
| EAN | 4251269324260 | Mounting height | 14 mm |
| Package quantity | 10 | Colour | blue (similar RAL 5005) |
| For max. no. of cables | 13 | Surface roughness (ISO 4287) | $R_a = 0,421 \mu\text{m}$ |
| Max. cable diameter | 20,5 mm | Cut-out size | 112 x 36 mm |
| Length | 147 mm | Thread | M4 |
| Width | 58 mm | For min. wall thickness | 1,5 mm |
| | | For max. wall thickness | 2 mm |
| | | No. of screw holes | 4 |
| | | Diam. of screw holes | 4 mm |
| | | Clamping range | 10 x 3.2 - 6.3 mm 3 x 16 - 20.5 mm |

KEL-DPU-HD 24|14

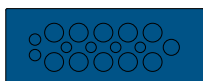
| | | | |
|------------------------|----------------------|------------------------------|---|
| Part No. | 73944 | Height | 14 mm |
| EAN | 4251269324277 | Mounting height | 14 mm |
| Package quantity | 10 | Colour | blue (similar RAL 5005) |
| For max. no. of cables | 14 | Surface roughness (ISO 4287) | Ra = 0,421 µm |
| Max. cable diameter | 10,5 mm | Cut-out size | 112 × 36 mm |
| Length | 147 mm | Thread | M4 |
| Width | 58 mm | For min. wall thickness | 1,5 mm |
| | | For max. wall thickness | 2 mm |
| | | No. of screw holes | 4 |
| | | Diam. of screw holes | 4 mm |
| | | Clamping range | 5 × 3.2 - 6.3 mm 2 × 4 - 7.5 mm 3 × 5.5 - 10.5 mm 1 × 8 - 12.5 mm 3 × 12 - 16.2 mm |

KEL-DPU-HD 24|16

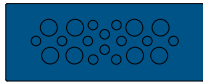
| | | | |
|------------------------|----------------------|------------------------------|--|
| Part No. | 73936 | Height | 14 mm |
| EAN | 4251269324284 | Mounting height | 14 mm |
| Package quantity | 10 | Colour | blue (similar RAL 5005) |
| For max. no. of cables | 16 | Surface roughness (ISO 4287) | Ra = 0,421 µm |
| Max. cable diameter | 14,5 mm | Cut-out size | 112 × 36 mm |
| Length | 147 mm | Thread | M4 |
| Width | 58 mm | For min. wall thickness | 1,5 mm |
| | | For max. wall thickness | 2 mm |
| | | No. of screw holes | 4 |
| | | Diam. of screw holes | 4 mm |
| | | Clamping range | 8 × 3.2 - 5.5 mm 6 × 5 - 8.5 mm 2 × 9.5 - 14.5 mm |

KEL-DPU-HD 24|16-1

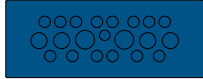
| | | | |
|------------------------|----------------------|------------------------------|---|
| Part No. | 73932 | Height | 14 mm |
| EAN | 4251269324291 | Mounting height | 14 mm |
| Package quantity | 10 | Colour | blue (similar RAL 5005) |
| For max. no. of cables | 16 | Surface roughness (ISO 4287) | Ra = 0,421 µm |
| Max. cable diameter | 16,2 mm | Cut-out size | 112 × 36 mm |
| Length | 147 mm | Thread | M4 |
| Width | 58 mm | For min. wall thickness | 1,5 mm |
| | | For max. wall thickness | 2 mm |
| | | No. of screw holes | 4 |
| | | Diam. of screw holes | 4 mm |
| | | Clamping range | 2 × 3.2 - 6.3 mm 9 × 4 - 7.5 mm 1 × 5.5 - 10.5 mm 1 × 8 - 12.5 mm 3 × 12 - 16.2 mm |

KEL-DPU-HD 24|17

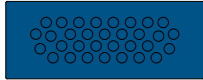
| | | | |
|------------------------|----------------------|------------------------------|---|
| Part No. | 73934 | Height | 14 mm |
| EAN | 4251269324307 | Mounting height | 14 mm |
| Package quantity | 10 | Colour | blue (similar RAL 5005) |
| For max. no. of cables | 17 | Surface roughness (ISO 4287) | Ra = 0,421 µm |
| Max. cable diameter | 12,5 mm | Cut-out size | 112 × 36 mm |
| Length | 147 mm | Thread | M4 |
| Width | 58 mm | For min. wall thickness | 1,5 mm |
| | | For max. wall thickness | 2 mm |
| | | No. of screw holes | 4 |
| | | Diam. of screw holes | 4 mm |
| | | Clamping range | 4 × 3.2 - 6.3 mm 2 × 4 - 7.5 mm 1 × 5.5 - 10.5 mm 10 × 8 - 12.5 mm |

KEL-DPU-HD 24|20

| | | | |
|------------------------|----------------------|------------------------------|--|
| Part No. | 73938 | Height | 14 mm |
| EAN | 4251269324314 | Mounting height | 14 mm |
| Package quantity | 10 | Colour | blue (similar RAL 5005) |
| For max. no. of cables | 20 | Surface roughness (ISO 4287) | Ra = 0,421 µm |
| Max. cable diameter | 10,5 mm | Cut-out size | 112 x 36 mm |
| Length | 147 mm | Thread | M4 |
| Width | 58 mm | For min. wall thickness | 1,5 mm |
| | | For max. wall thickness | 2 mm |
| | | No. of screw holes | 4 |
| | | Diam. of screw holes | 4 mm |
| | | Clamping range | 12 x 3.2 - 5.5 mm 8 x 5 - 10.5 mm |

KEL-DPU-HD 24|21

| | | | |
|------------------------|----------------------|------------------------------|---|
| Part No. | 73930 | Height | 14 mm |
| EAN | 4251269324321 | Mounting height | 14 mm |
| Package quantity | 10 | Colour | blue (similar RAL 5005) |
| For max. no. of cables | 21 | Surface roughness (ISO 4287) | Ra = 0,421 µm |
| Max. cable diameter | 12,5 mm | Cut-out size | 112 x 36 mm |
| Length | 147 mm | Thread | M4 |
| Width | 58 mm | For min. wall thickness | 1,5 mm |
| | | For max. wall thickness | 2 mm |
| | | No. of screw holes | 4 |
| | | Diam. of screw holes | 4 mm |
| | | Clamping range | 1 x 3.2 - 6.3 mm 14 x 4 - 7.5 mm 4 x 5.5 - 10.5 mm 2 x 8 - 12.5 mm |

KEL-DPU-HD 24|32

| | | | |
|------------------------|----------------------|------------------------------|--------------------------------|
| Part No. | 73942 | Height | 14 mm |
| EAN | 4251269324338 | Mounting height | 14 mm |
| Package quantity | 10 | Colour | blue (similar RAL 5005) |
| For max. no. of cables | 32 | Surface roughness (ISO 4287) | Ra = 0,421 µm |
| Max. cable diameter | 6,3 mm | Cut-out size | 112 x 36 mm |
| Length | 147 mm | Thread | M4 |
| Width | 58 mm | For min. wall thickness | 1,5 mm |
| | | For max. wall thickness | 2 mm |
| | | No. of screw holes | 4 |
| | | Diam. of screw holes | 4 mm |
| | | Clamping range | 32 x 3.2 - 6.3 mm |